

# Very Simple Ribbed Corset

*With Lace Edging and Crocheted Trim*

Annie Modesitt

## Materials

Size 5 Circular needles (or size for gauge)  
2 Stitch Markers  
Darning Needle  
Size E Crochet Hook  
Buttons for front (22 - 28, varies)

Yarn: 600 (650, 700, 750, 800, 850) yds of  
worsted weight yarn

Gauge = 5.5 sts = 1" on size 5 needles or  
size to achieve gauge.

## Corset Tank Top

With a single strand of yarn and needles to  
obtain gauge, cast on 199 (219, 239, 259,  
289, 309) sts. Knit 1 row.

## Neckline Lace Motif

Either working off of chart or following  
written instructions, work lace pattern as  
follows:

Row 1: K4, place marker (pm), (k1, YO, k3,  
VDD, k3, YO) rep 19 (21, 23, 25, 28, 30)  
times, k1, pm, k4 - 199 (219, 239, 259, 289,  
309) sts. Row 2: Knit all sts, slipping  
markers.

Rep rows 1 & 2 of charted lace pat twice  
more - 6 rows total.

Row 3:: K4, slip marker (sm), (k1, YO, k3,  
VDD, k3, YO) rep 19 (21, 23, 25, 28, 30)  
times, k1, sm, k4. Row 4: K4, sm, purl to  
next marker, sm, k4  
Rep rows 3 & 4 of charted lace pat until  
piece meas 3 (3-1/4, 3-1/2, 3-3/4, 3-3/4, 4) " /  
(8.3, 9, 9.6, 9.6, 10.3) cm from cast on row,  
end with a WS row.

## Armholes

Continuing working outer 4 sts on each  
edge in garter st, work armholes as foll:

Next row (RS): K4, sm, work 29 (33, 36, 39,  
43, 47) sts, loosely BO next 38 (40, 44, 48,  
54, 56) sts, knit next 27 (31, 34, 37, 42, 46)  
sts, K2tog, knit next 28 (32, 35, 38, 43, 47)  
sts, BO next 38 (40, 44, 48, 54, 56) sts, knit  
29 (33, 36, 39, 43, 47) sts, sm, k4

Next row (WS): K4, sm, p 29 (33, 36, 39, 43,  
47) sts, cast on 38 (40, 44, 48, 53, 55) sts,  
purl to next bound off section, cast on 38  
(40, 44, 48, 53, 55) sts, purl next 29 (33, 36,  
39, 43, 47) sts, sm, k4 - 196 (216, 236, 256,  
284, 304) sts

Next row (RS): k4, sm, (k2, p2) rep to 2 sts  
before next marker, k2, sm, k4.

Next row (WS): K4, sm, (p2, k2) rep to 2  
sts before next marker, p2, sm, k2

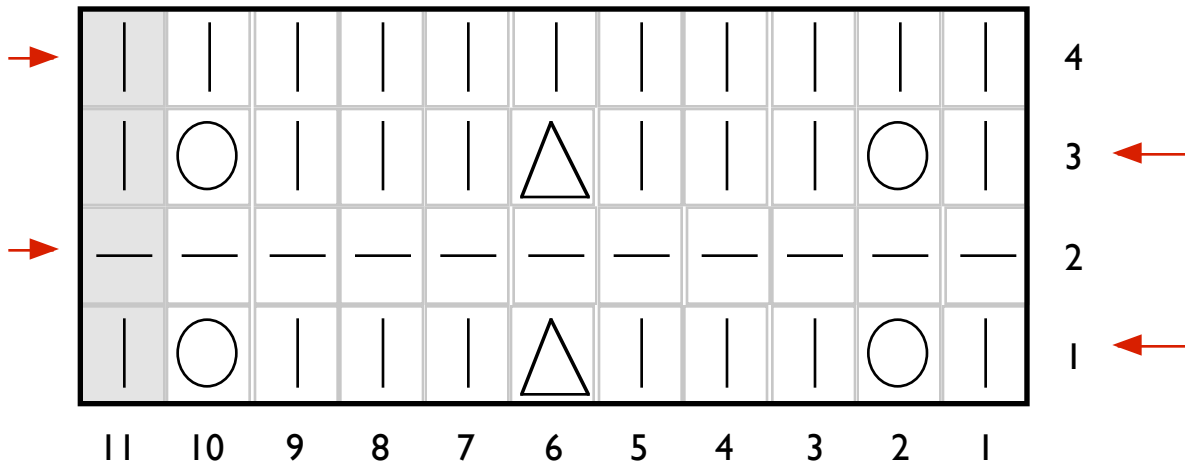
Rep last 2 rows until piece meas 22-1/4 (23-  
1/4, 24-1/2, 25-3/4, 27-1/4, 29-1/4) " /  
(59.6, 62.8, 66, 69.9, 75) cm or desired  
length. BO very loosely in rib.

## Crocheted Trim

With a single strand of yarn and size E  
crochet hook and starting at lower left  
front, sc 197 (217, 237, 257, 285, 305) sts  
around bottom edge, sc 3 sts into corner, sc  
5 (5, 2, 3, 5, 5) sts up right front edge, (ch 2,  
sk 2, sc next 3) rep along right front edge,  
creating a buttonhole with each ch2/sk2. III  
(116, 123, 129, 136, 146) will be worked  
along right front edge, sc 3 sts into corner.

Sc 199 (219, 239, 259, 289, 309) sts along  
neck edge, sc 3 into corner, sc III (116,  
123, 129, 136, 146) sts down left front edge,  
sc 3 sts into corner, Tie off last st, FO,

weave in loose ends.



**VDD** (*Vertical Double Decrease*) - Slip 2 sts as if to K2tog, k1, pass slipped sts over the knit st.



**YO** (*Yarn Over*) - Wrap yarn over needle before inserting into next stitch.



**KI** (*Knit 1*) - On Right side, K1. On Wrong side, P1.



**PI** (*Purl 1*) - On Right side, P1. On Wrong side, K1.

**Row 1:** (K1, YO, k3, VDD, k3, YO) rep to end, end k1 (grey stitch)

**Row 2:** Knit all sts

**Row 3:** (K1, YO, k3, VDD, k3, YO) rep to end, end k1 (grey stitch)

**Row 4:** Purl all sts